

Riding the Hokuriku Rail Road

Get to Tsurugi in less than 40 minutes with this comprehensive guide of the Hokuriku Rail Road: Ishikawa Line.

From Kanazawa Station

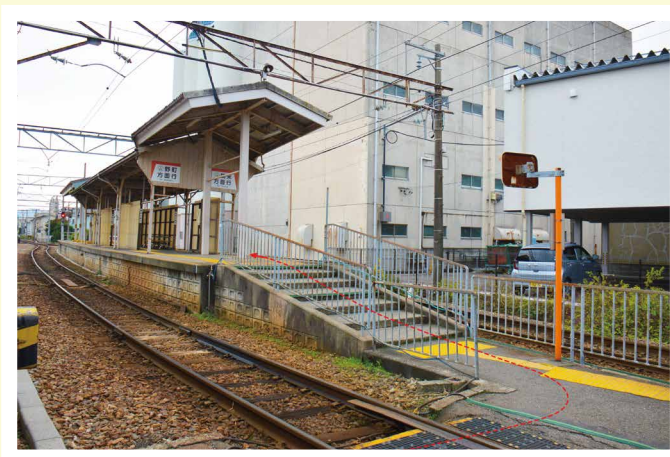
1 Catch a **Local** train bound for either Komatsu or Fukui. Ride one stop to Nishi-Kanazawa Station.



2 Leave Nishi-Kanazawa Station via the East Exit, and walk to Shin-Nishikanazawa Station.



3 Move to the platform and catch the train headed toward Tsurugi from the **right-hand** side of the platform.



4 As you board, take a paper ticket from the machine by the door. When exiting at Tsurugi Station, give this ticket, and your ride fee to the guard at the exit (¥ 500 as of Aug 2021).



Change Machines

At the front of the train there's a change machine. If you do not have the exact change needed to pay the ride fare, please use this machine to split notes and coins. ¥ 1000 notes are placed in the slot at the side. ¥ 500, ¥ 100, and ¥ 50 coins are placed into the slot at the top. You cannot use ¥ 5000 or ¥ 10,000 notes. The Fare Box is for inserting tickets and ride fares when exiting the train at mid-stations (not at end-stations).



Riding the Hokuriku Rail Road

From Downtown Kanazawa

1 Walk or catch a bus to Nomachi Station, near the south of downtown Kanazawa.



2 Buy a ticket from the ticket machine next to the gate. Insert change or a ¥ 1000 note, and select Tsurugi.



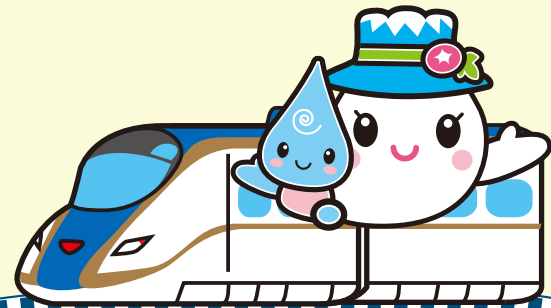
3 When the train is ready to board the gates will open. Show your ticket to the guard at the gate as you enter. After arriving at Tsurugi, give your ticket to the guard at the exit.

Returning from Tsurugi

1 Buy a ticket at the machine next to the counter. Whether travelling back to Nomachi or Shin-Nishi Kanazawa Station, tickets can be purchased here.



2 When the train is ready to board the gates will open. Show your ticket to the guard as you enter. If getting off at Shin-Nishikanazawa put your ticket into the fare box at the front of the train as you exit (see the Change Machines image on the opposite page). If getting off at Nomachi, give the ticket to the guard at the exit gate as you leave.



Hakusan Todorigawa Geopark Image Characters
"Yuki Mama and Shizuku-chan"