

Tedori Canyon Road



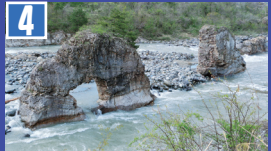
The Tedori Canyon Road is a 19.6 km cycling path connecting Old Ichinomiya Station, near the Shirayama Hime Shrine, to the Roadside Station Sena, in Oguchi. Experience the relationship between earth and nature, and how it affects the people who live there.

In the past the Hokuriku Rail Road ran between Ichinomiya Station and Hakusanshita Station. Nowadays the railway line has been re-purposed as a cycling path.

▼The view of the Tedori Alluvial Fan from Shishiku Highlands
Ride to the top of this roughly 600m high mountain in just a few minutes, and see the land spread out before your eyes. See the mountains and valleys, the Tedori Alluvial Fan, and the Sea of Japan in the distance.



▼Meoto-iwa Rock
Two strangely shaped rocks that stand in the middle of the river.



▼Kobo-ike Pond
Springwater flows from this strangely shaped hole in the ground. Ranked in Japan's 100 famous waters.



▲Shirayama Hime Shrine
The main Hakusan shrine of Japan, devoted to the God of Hakusan.



▲Fukuoka Dai-ichi Power Plant
The first power plant that utilized the Tedori River, built in 1911.



▲Torigoe Castle Ruins
The area of the last battle between the area's rebel group, and the Nobunaga army. It is located on a hill with a beautiful view over the Tedori and Dainichi rivers.



▲Oboke-sugi Cedar Tree
Estimated at over 680 years old, this one tree spreads its branches widely.

▼The view of the Tedori Gorge from Komon Bridge



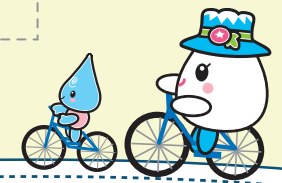
▲The view of the Tedori Gorge from Furo Bridge

Tedori Gorge
Located in the mid-section of the Tedori River, this 20 to 30m deep gorge runs for approximately 8km. The Tedori River carved deeply into the 10 to 20 million year old volcanic base rock.



▲Watagataki Waterfall
View this roughly 32m high waterfall by descending deep into the gorge.

*Cycling time is an estimation



Tedori Canyon Road



Yuki mama & Shizuku-chan
Hakusan Tedorigawa Geopark Mascots

Contact Us

Hakusan Tedorigawa Geopark
Promotion Council
924-8688 Ishikawa Hakusan Kuramitsu 2-1
TEL : 076-274-9564 FAX : 076-274-9546
E-mail : geopark@city.hakusan.lg.jp Web : <http://hakusan-geo.jp/en>



Rental Bikes



Hakusan City Tourism League

- Price

Standard Bikes	¥ 300 ~ / Day
Electric Bikes	¥ 700 ~ / Day
- Opening Hours

9am - 5pm
(Last rental at 4pm)
- Location

Hakusan Tsurugi Honmachi 4 Choume Nu 85 (Tsurugi Branch 1F)
076-259-5893

Hakusan City Tourist Information Center

- Price

Standard Bikes	¥ 300 ~ / Day
----------------	---------------
- Opening Hours

9am - 5pm
(Last rental at 4pm)
- Location

Nomi, Wasadanimachi 200 (Roadside Station Shirayamasan)
076-273-4851

Hakusanshita Club

- Price

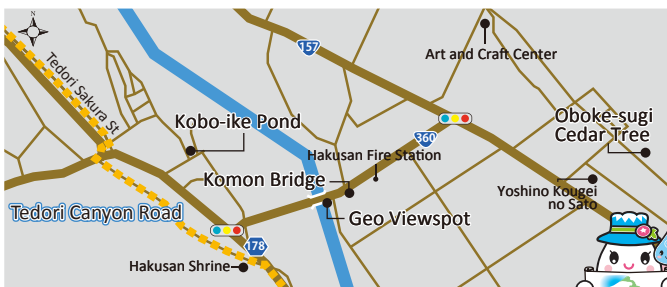
Standard Bikes	¥ 500/ Day
Electric Bikes	¥ 1000/ Day
- Operating Season

May to Oct
Sat, Sun, and Holidays
- Location

Hakusan Kawarayama Machi
(Hakusanshita Station)
090-9443-5591
- Opening Hours

9am - 4pm
(Last rental at 2pm)

Close-Up Map

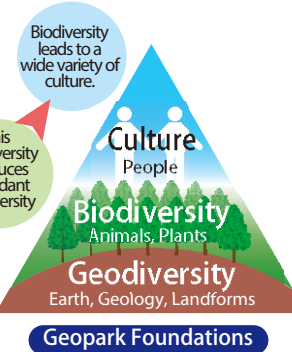


What is a Geopark?

A Geopark is a place to learn about connections between “Geodiversity,” “Biodiversity,” and “Culture,” and to enjoy them.



The Earth is formed in various ways.



Geopark Foundations

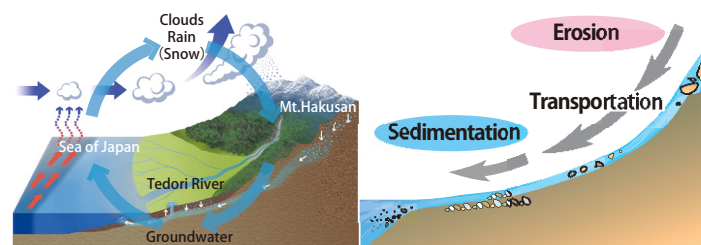


The Story of Hakusan Tedorigawa Geopark

THEME Water nurtures the lives – on the way through the Mountain, River, and Sea

The snow and rain that falls over the land between the sea of Japan and Mt. Hakusan returns to the sea. Inside this journey of water you can also see the journey of rock which has continued since long ago.

The Journey of Water and Rock



Three Areas to Experience the Theme

The Hakusan Tedorigawa Geopark consists of 3 areas, and various geosites. In each area you can experience the relationship between the land, nature, and the people who live here.

Sea and Alluvial Fan Area

River and Gorge Area

Mountain and Snow Area